



Stra8 Polyclonal Antibody

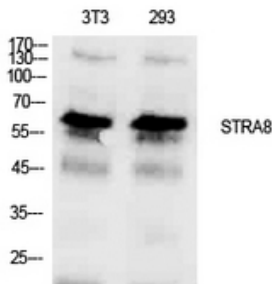
Catalog No	YP-Ab-12865
Isotype	IgG
Reactivity	Human;Rat;Mouse;
Applications	WB;IHC
Gene Name	STRA8
Protein Name	Stimulated by retinoic acid gene 8 protein homolog
Immunogen	The antiserum was produced against synthesized peptide derived from the Internal region of human STRA8. AA range:151-200
Specificity	Stra8 Polyclonal Antibody detects endogenous levels of Stra8 protein.
Formulation	Liquid in PBS containing 50% glycerol, 0.5% BSA and 0.02% sodium azide.
Source	Polyclonal, Rabbit,IgG
Purification	The antibody was affinity-purified from rabbit antiserum by affinity-chromatography using epitope-specific immunogen.
Dilution	WB 1:500-2000;IHC-p 1:50-300
Concentration	1 mg/ml
Purity	≥90%
Storage Stability	-20°C/1 year
Synonyms	STRA8; Stimulated by retinoic acid gene 8 protein homolog
Observed Band	66kD
Cell Pathway	Cytoplasm . Nucleus . Shuttles between nucleus and cytoplasm. Nuclear export is XPO1-dependent. .
Tissue Specificity	Expressed specifically in testis and fetal ovaries.
Function	function:Required for the transition into meiosis for both female and male germ cells. In female germ cells, required for premeiotic DNA replication and subsequent events in meiotic prophase.,PTM:Phosphorylated.,tissue specificity:Expressed specifically in testis.,
Background	This gene encodes a retinoic acid-responsive protein. A homologous protein in mouse has been shown to be involved in the regulation of meiotic initiation in both spermatogenesis and oogenesis, though feature differences between the mouse and human proteins suggest that these homologs are not entirely functionally equivalent. It is thought that this gene may play a role in spermatogenesis in humans. [provided by RefSeq, Nov 2010],
matters needing attention	Avoid repeated freezing and thawing!



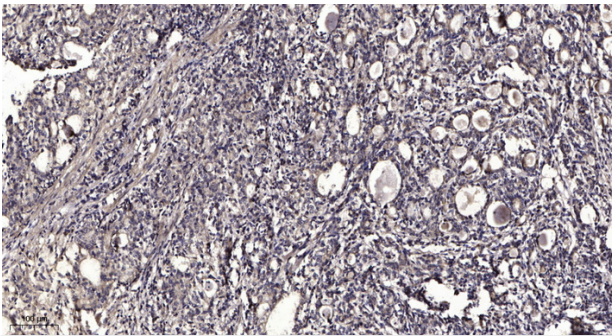
Usage suggestions

This product can be used in immunological reaction related experiments. For more information, please consult technical personnel.

Products Images



Western Blot analysis of NIH-3T3, 293 cells using Stra8 Polyclonal Antibody. Antibody was diluted at 1:1000. Secondary antibody(catalog#:RS0002) was diluted at 1:20000



Immunohistochemical analysis of paraffin-embedded human Gastric adenocarcinoma. 1, Antibody was diluted at 1:200(4° overnight). 2, Tris-EDTA,pH9.0 was used for antigen retrieval. 3,Secondary antibody was diluted at 1:200(room temperature, 45min).